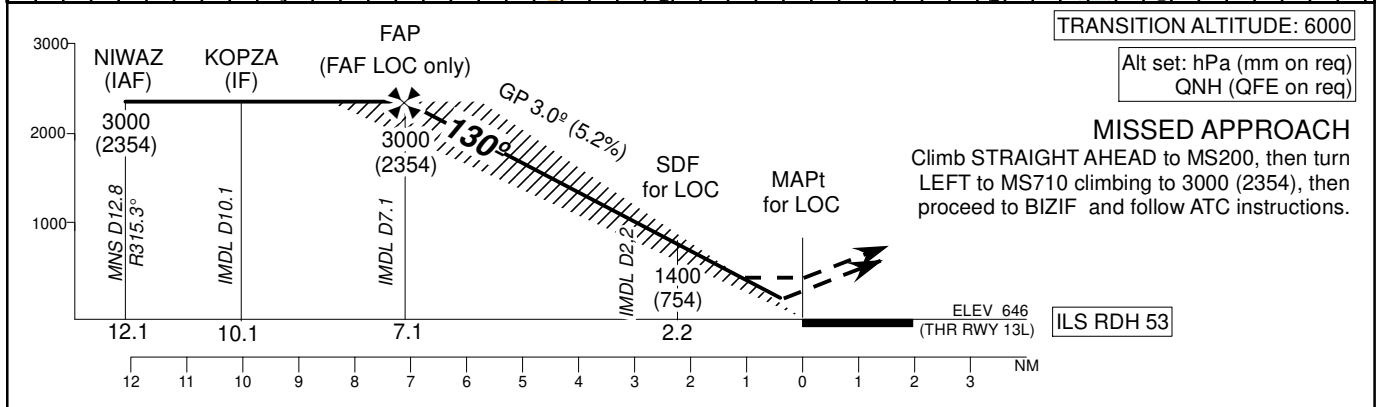
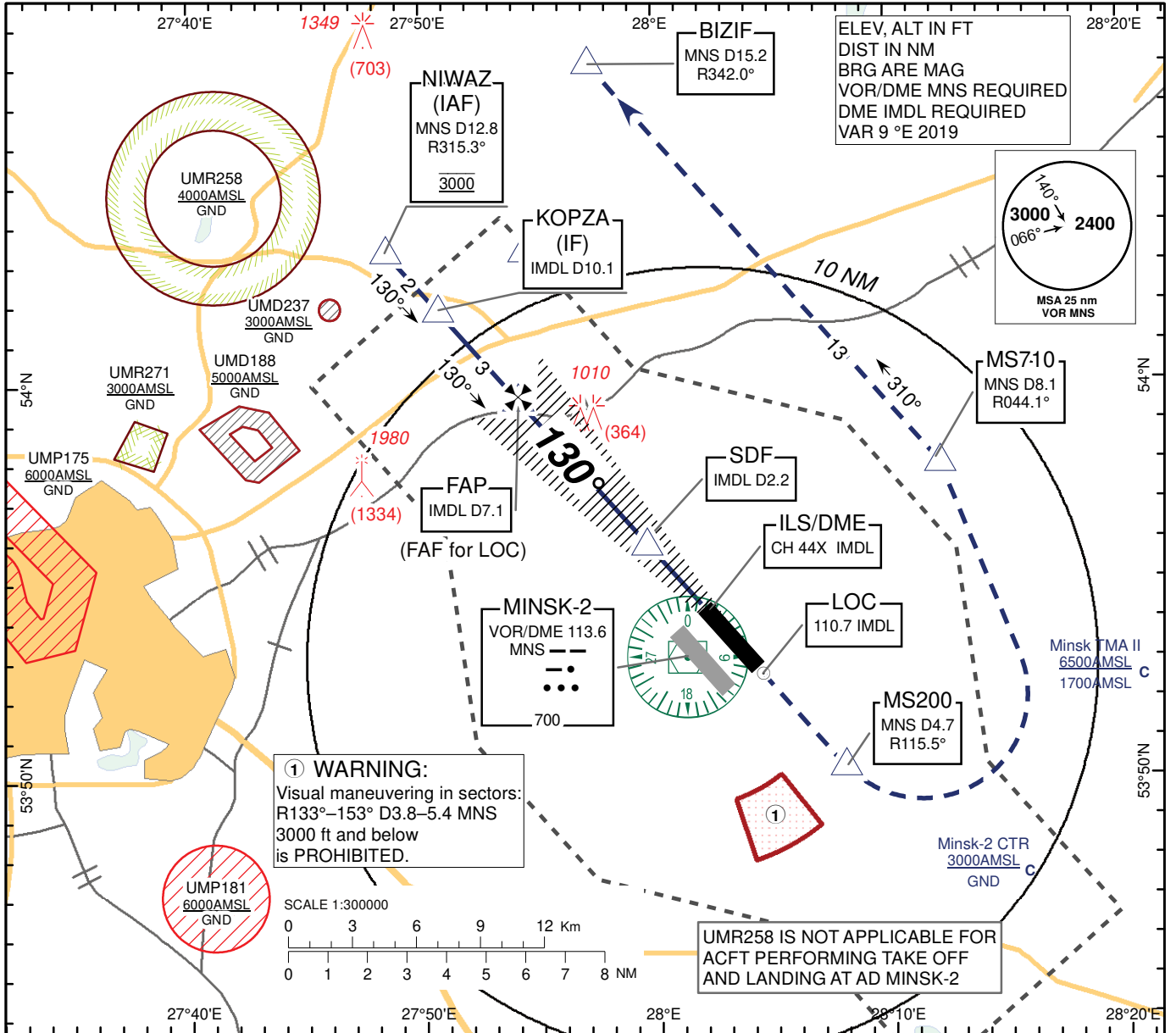


**INSTRUMENT
APPROACH
CHART - ICAO**

AERODROME ELEV 681
HEIGHTS RELATED TO
THR RWY 13L - ELEV 646

MINSK RADAR	125.250
MINSK TWR	130.400 PRI 118.300 SRY
MINSK-2 ATIS	128.850 EN 135.850 RUS

**MINSK-2
ILS CAT I, II, III
LOC
RWY 13L**



Aircraft Category	A	B	C	D	Dist to THR DME IMDL	8	7	6	5	4	3	2	1	
Straight-in Approach OCA(H)	ILS CAT I	784 (138)	790 (144)	800 (154)	807 (161)	ALTITUDE	3000	2928	2609	2291	1973	1654	1336	1017
	ILS CAT II	695 (49)	705 (59)	718 (72)	731 (85)	HEIGHT	(2354)	(2282)	(1963)	(1645)	(1327)	(1008)	(690)	(371)
	LOC with SDF	1010 (360)												
LOC without SDF	1270 (620)													
Circle - to - land	1230 (550)	1250 (570)	1400 (720)	1410 (730)	Timing not authorized for defining the MAPt									
					GS	Kts	120	140	160	180	200	220		
					Desc.Rate(5.2%)	ft/min	640	740	850	960	1060	1170		

CHANGE: RWY13R/31L withdrawn. Modified communication facilities.

MINSK-2
ILS CAT I, II, III & LOC
RWY 13L

AERONAUTICAL DATA TABULATION

ILS approach to RWY13L from NIWAZ	
Fix/point	Coordinates
NIWAZ (IAF) R 315.3° D12.8 MNS	540323N 0274827E
KOPZA (IF) D10.1 IMDL	540153.6N 0275041.E
(FAP) (FAF for LOC) D7.1 IMDL	535938N 0275404E
MS710 R 044.1° D8.1 MNS	535758N 0281208E
BIZIF R 342.0° D15.2 MNS	540807N 0275712E
MS200 R 115.5° D4.7 MNS	535024N 0280748.4E
MNS VOR/DME	535304.0N 0280114.3E
IMDL LOC	535238.3N 0280429.2E
IMDL ILS/DME	535259.5N 0280407.2E
SDF (for LOC)	535558N 0275932E
(MAPt for LOC)THR RWY 13L	535419.03N 0280159.75E